



CERAMIC FUEL CELLS LIMITED

Clean power for your home

NetGen^{Plus}TM

Presented to

**Analyst Open Day
Candy Park**

Brendan Dow

Managing Director

Ceramic Fuel Cells Limited

29 February 2008





Disclaimer

This Presentation has been prepared by, and is proprietary to, Ceramic Fuel Cells Limited ('CFCL').

This Presentation does not constitute or form part of an offer for sale or subscription or an invitation or solicitation of an offer to subscribe for or purchase any securities and neither this document nor anything contained herein shall form the basis of any contract or commitment whatsoever.

No representation or warranty, express or implied, is given by CFCL, its Directors, employees or professional advisors as to the accuracy, fairness, sufficiency or completeness of the information, opinions or beliefs contained in this document. Except in the case of fraud, no liability is accepted for any loss, cost or damage suffered or incurred as a result of the reliance on such information, opinions or beliefs.

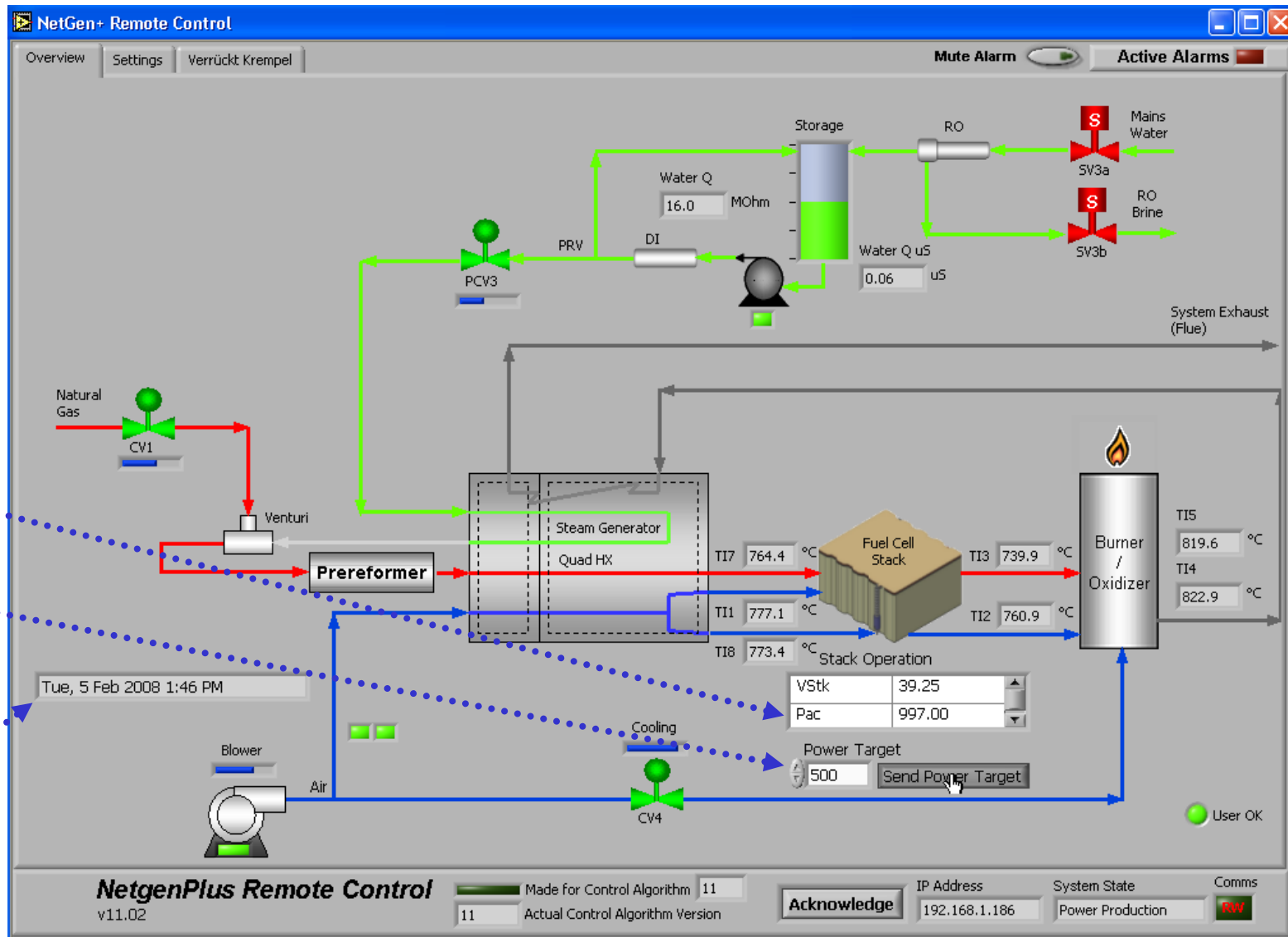
The information in this Presentation reflects prevailing conditions and the views of CFCL as of this date, which are subject to change.



Overview

- **Complete systems**
 - Metal-ceramic stack plus integrated Balance of Plant
 - Three units shipped to partners, two units installed in Melbourne
- **Real world conditions**
 - Connected to existing natural gas, grid, water, phone line
- **Exporting power to the grid**
- **Flexible operating modes to maximise utility value**
 - Rapid and repeated modulation
 - Reflect the wholesale market
- **Remote control over the Internet**
 - CFCL proprietary software
 - Comprehensive system monitoring and control
 - Simple customer user interface
 - 24/7 Internet access





Existing Stack Output (Watts, AC)

Target Stack Output

Time stamp



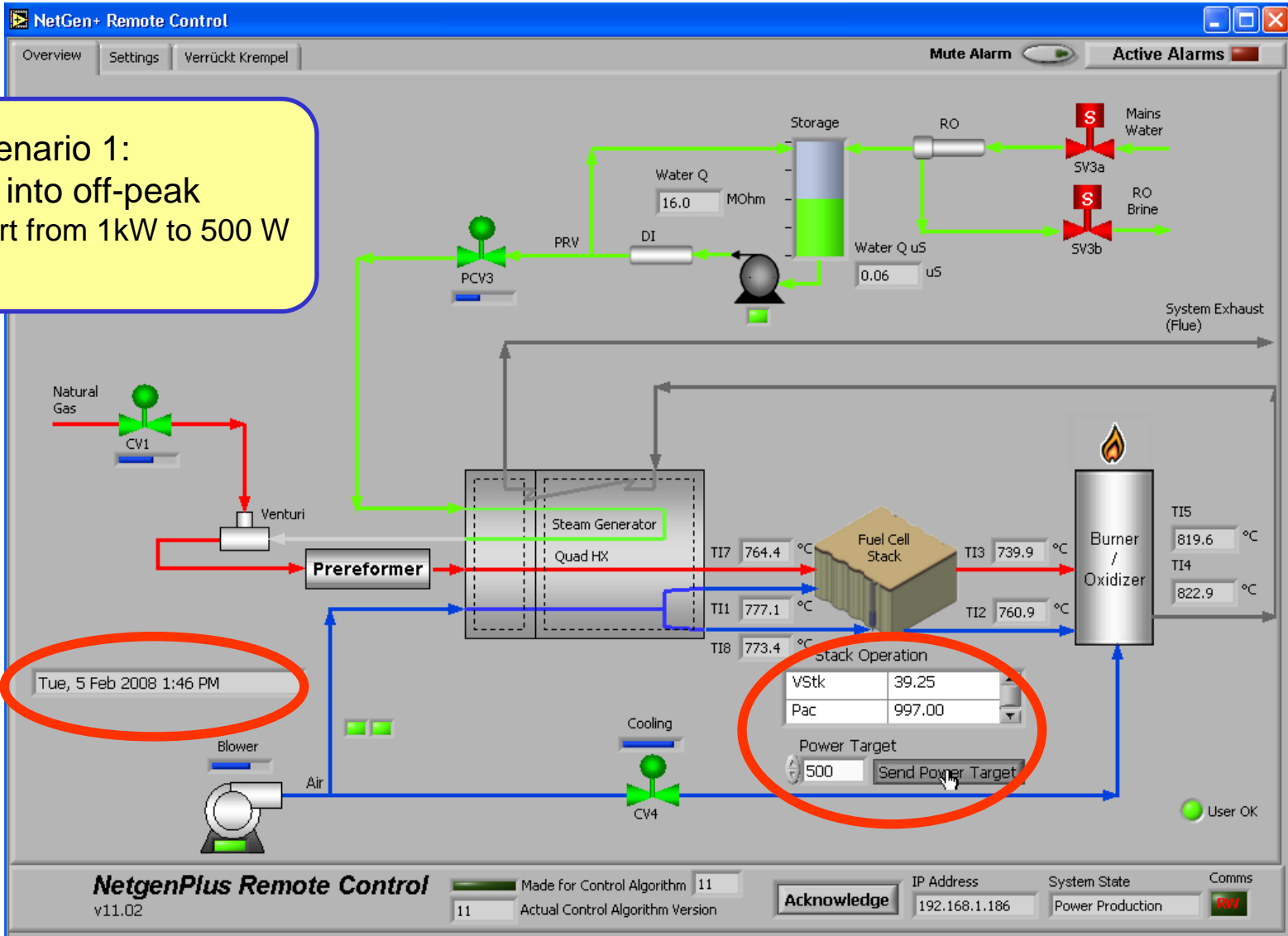
Reducing Power - Before

Scenario 1:
Moving into off-peak
Reducing export from 1kW to 500 W

Exporting
997 Watts
at 1.46pm

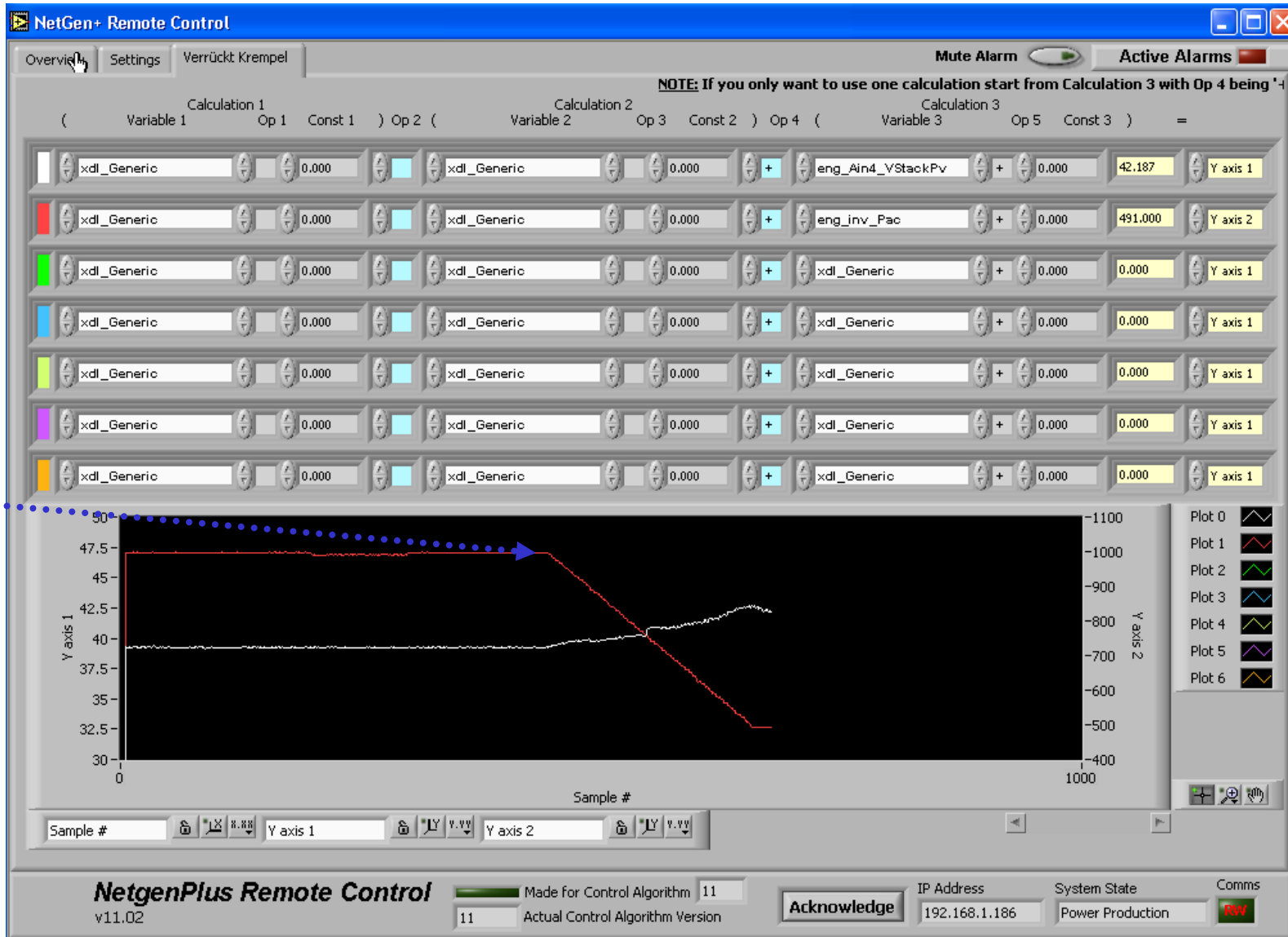
Enter
new target
of 500 Watts

Press 'send'





Reducing Power - During

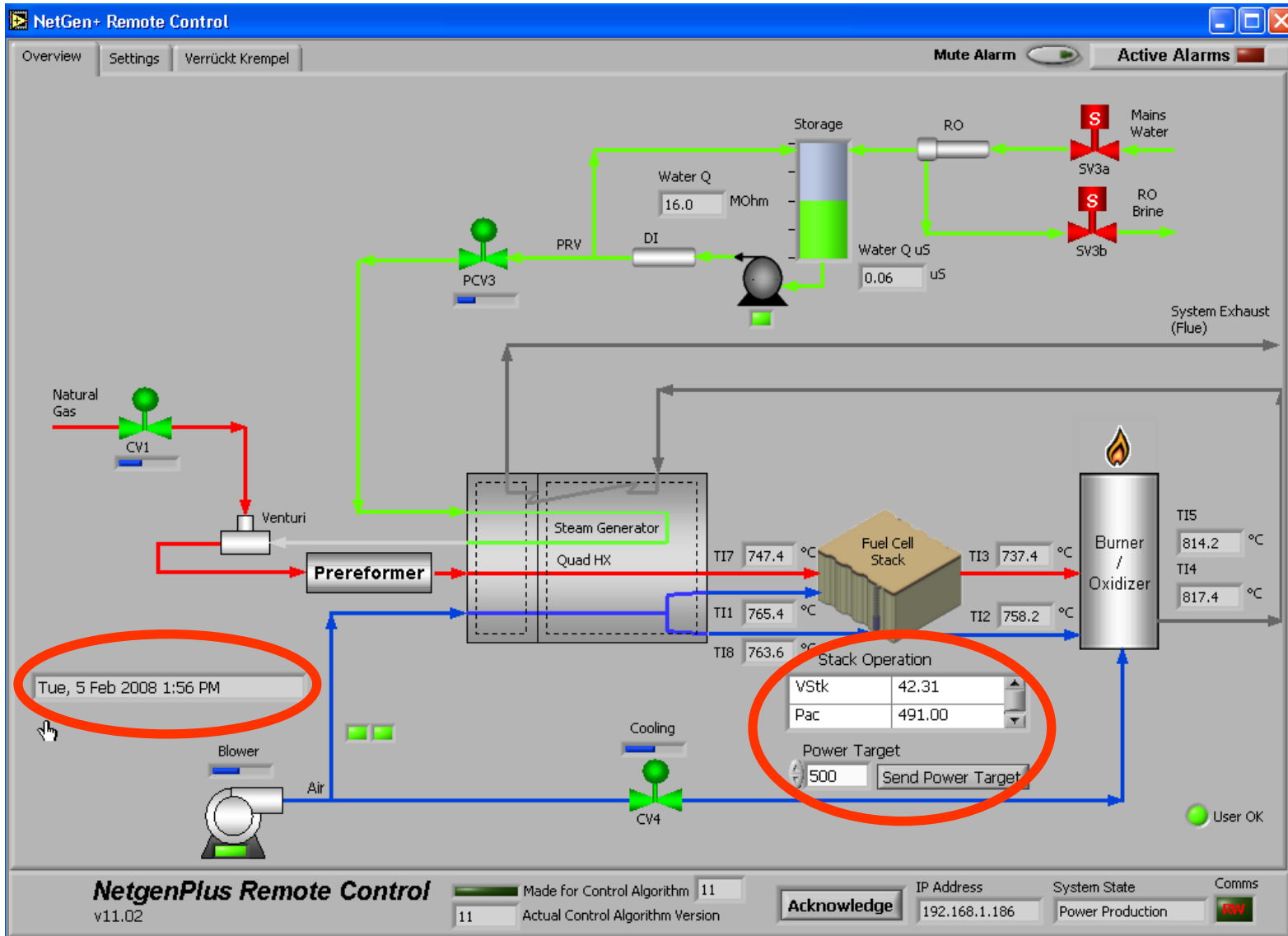




Reducing Power - After

Exporting
491 Watts
at 1.56pm

500 Watt Drop
in <10 mins





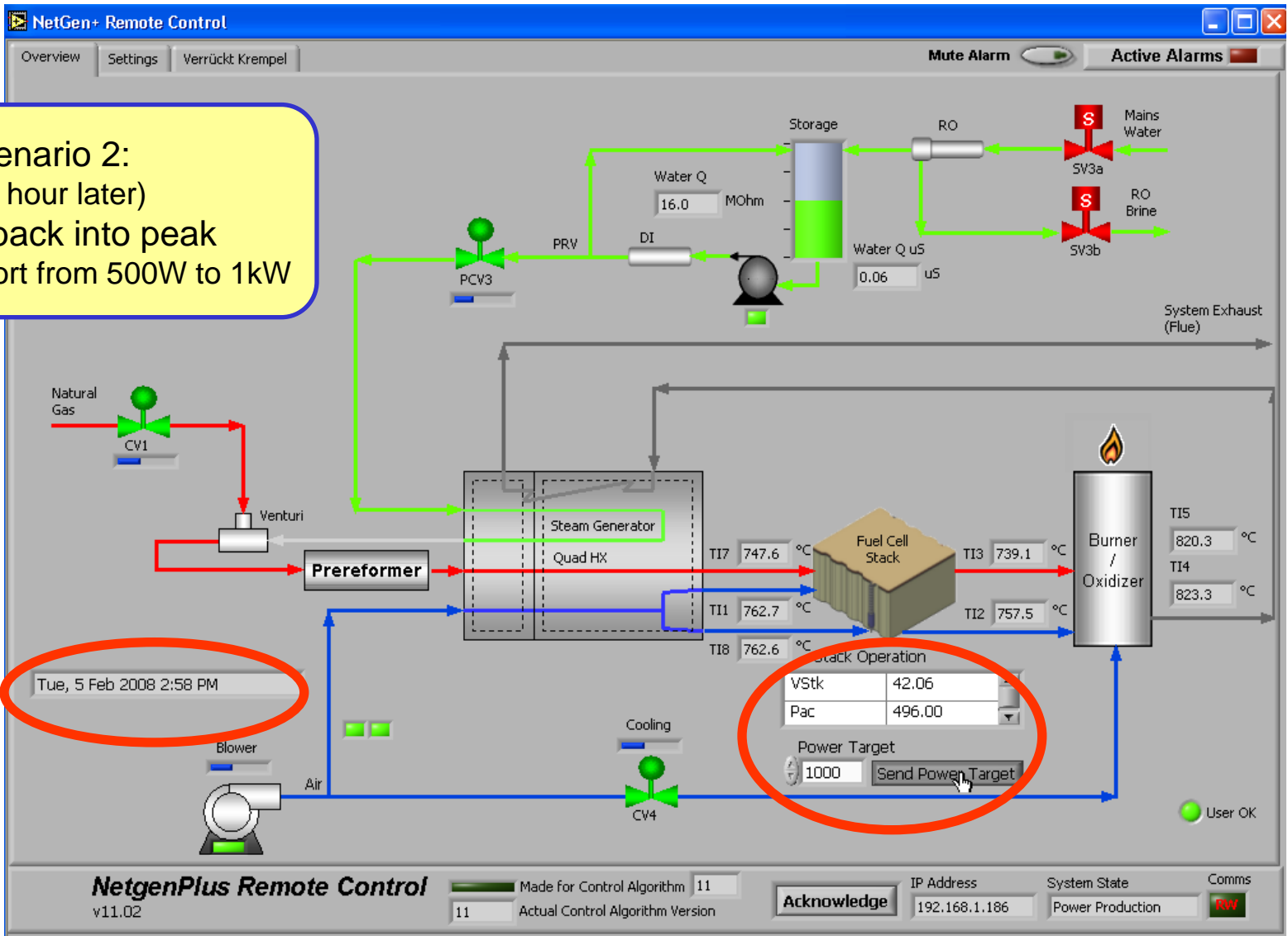
Increasing Power - Before

Scenario 2:
 (one hour later)
 Moving back into peak
 Increasing export from 500W to 1kW

Exporting
 496 Watts
 at 2.58pm

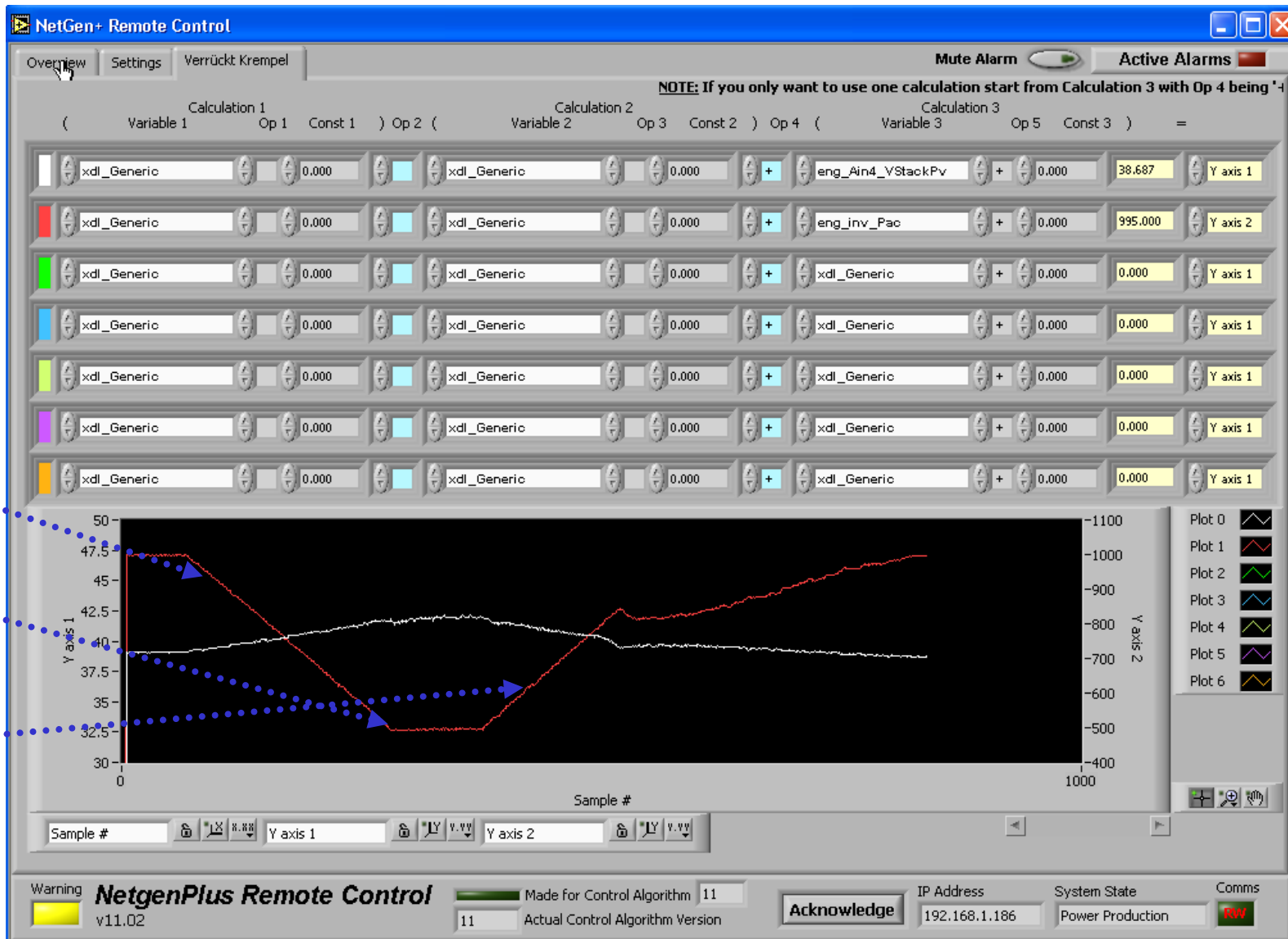
Enter
 new target
 of 1kW

Press 'send'





Increasing Power - During



Power Reduced to 500W, stable for one hour, Now increases



Increasing Power - After

Exporting 997 Watts at 3.19pm

500 Watt Rise in 20 mins

Same system, One hour apart

